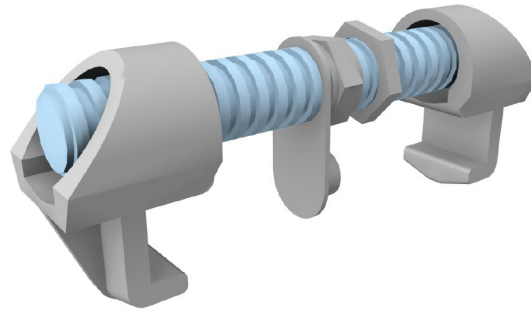




# BRIDGE FITTING COMPRESSION TYPE



Model  
BFTC-260

Weight  
4.7 kg

Breaking Load  
Compression 40T  
Tensile 51.1T

Material  
Carbon Steel, Ductile Iron,  
Mild Steel

Finish  
Hot Dip Galvanized

Technical alterations reserved

Drawing No. L96SA0108

