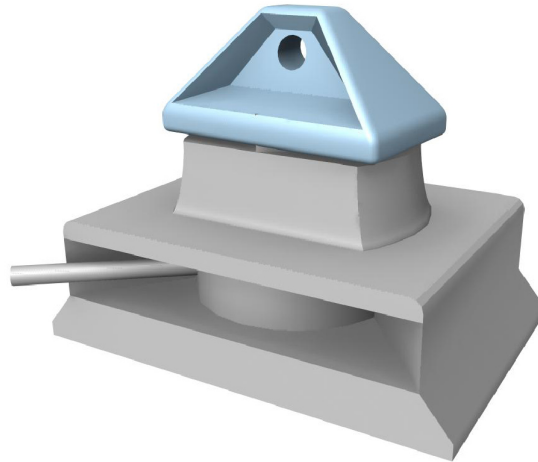




# BASE TWISTLOCK TRANSVERSAL



Model  
TLBT

Weight  
6.4 kg

Breaking Load  
Shear 31.7T  
Tensile 36T

Material  
Alloy Steel, Cast Steel

Finish  
Hot Dip Galvanized

Technical alterations reserved

Drawing No. L96LS9101

