

ClipLock is a simple, indicative and economical metal seal made from tinplate material. It is corrosion resistance and can be embossed with logo and sequential serial numbers on both surfaces. The seal can be supplied with variable length wire and is easy to apply without the use of any tool.

APPLICATIONS

- Tankers – Oil & Gas
- Utility Meters & valves
- Drum Closures
- Small Fastening
- Valves & Piping
- Ballot Boxes

FEATURES

- Double-clicking engagement
- Logo Emboss Area
- Sequential Numbering
- Flexible wire lengths

BENEFITS

- Two sounds of “click” to indicate it is fully tightened
- Customisable with logo/name stamping
- Seal body will break into two if it is forced opened
- Flexible to seal various application sizes

SPECIFICATIONS

Type & Size

ClipLock V2 20.0mm X 18.5mm X 5.0mm thickness (after sealed)
(MC02AA)

Material

Tinplate 0.25mm in thickness

Print

Embossed name/logo & serial number

For customize logo/name, block charge apply for order qty. <100K

Colour

Aluminium natural colour

Other

Wires are sold separately

Temperature

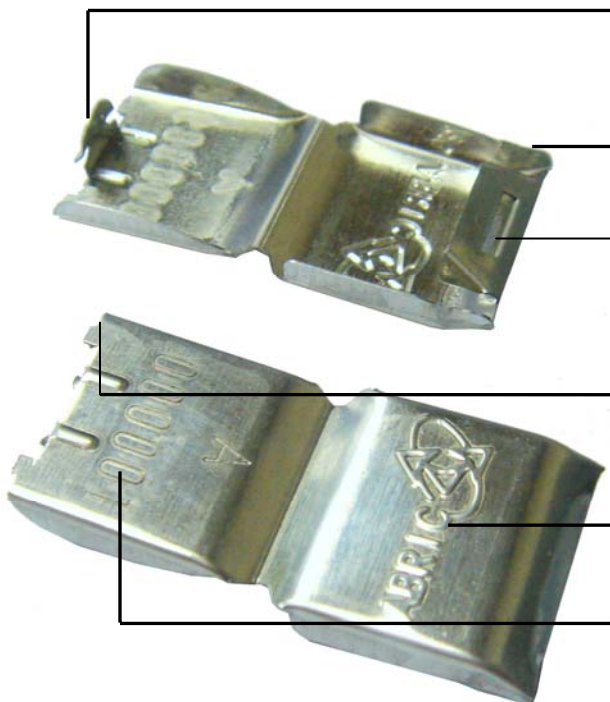
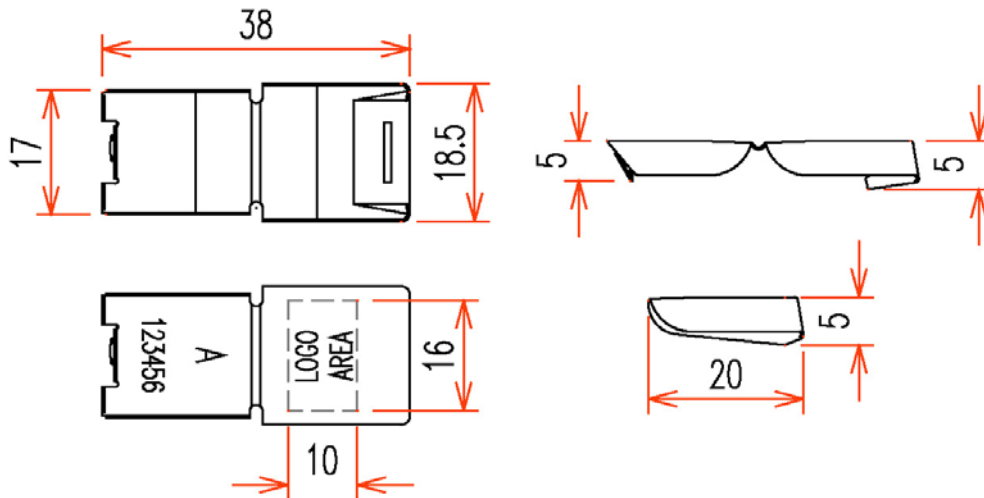
-40°C to 200°C (-40°F to 392°F)

Packaging

500pcs/inner carton,
5000pcs/outer carton



DIMENSIONS



Double Secure Upper Lock Design

Two sounds of "click" to indicate it is fully tightened. This male side will bend to secure after final click sound.

Better Finishing Edges

More friendly to the hands.

Lower Lock Design

When trying to tamper after locked, this female end will break from the ClipLock body, so it cannot be re-used.

Mat Design

Easy to remove ClipLock from the mat, and come with mat of 10 pieces.

Logo Emboss Area

16mm x 10mm area for logo embossed.

Sequential Numbering

6 digits running number.

ABRIC, your Global Supplier of Security Sealing Solutions.
For further information, please visit our website for nearest contact:

www.abric.com

Sealing Assets Globally with quality and integrity