

InnoLock is a fixed length seal with a metal jaw which is less susceptible to tampering by heat. It is made from polypropylene and is specially designed for applications that require a fixed length flat strap.

## APPLICATIONS

- Vehicle doors
- Tankers - petroleum, bulk foods & liquid
- Shipping containers

## FEATURES

- Fixed loop design
- Metal Jaw locking mechanism
- Available with Side Tear Off option
- 10mm Flat Strap

## BENEFITS

- Allows movements of the door latch without applying strain on the seal
- Enhanced level of security
- User friendly, easy removal without using tool
- Flexibility of having logo or barcode printed on tag & strap

## SPECIFICATIONS

### Type & Size

- **InnoLock 200 NTO** - 200mmL, Tag Size 20x40mm, Non Tear Off (IN20NA)
- **InnoLock 200 STO** - 200mmL, Tag Size 20x40mm, Side Tear Off (IN20SA)

### Strength

> 12kgs/ 26.5lbs

### Material

Body - Polypropylene

Jaw - Metal

### Print

Hot Stamped Name/logo and serial number

### Colour

6 standard colours - Red, Yellow, Blue, Green, White, Orange

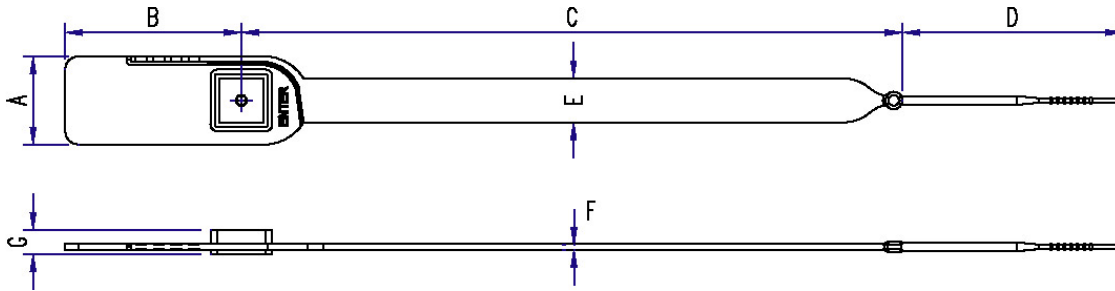
Other colours can be supplied on request

### Packaging

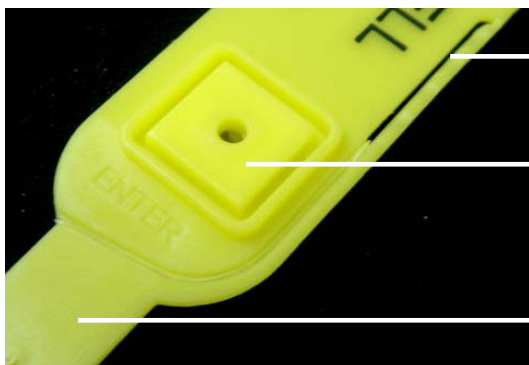
Inner cartons 1000pcs



## DIMENSIONS



Type	A mm [inch]	B mm [inch]	C mm [inch]	D mm [inch]	E mm [inch]	F mm [inch]	G mm [inch]
InnoLock	20 [0.79"]	40 [1.58"]	150 [5.9"]	50 [1.97"]	10 [0.39"]	1 [0.004"]	5.5 [0.22"]



### Side Tear Off Option

*Requires no tool for removing the seal*

### Metal Jaw

*Enhanced security - not susceptible to heat in the same way as plastic*

### 10mm Width Flat Strap

*Limits the seal movement while in the latch/lock, also provides optional printing area*



### Round Smooth Stem

*User friendly & not aggressive to hands*

### Stopper Design

*Prevents over pulling*

ABRIC, your Global Supplier of Security Sealing Solutions.  
For further information, please visit our website for nearest contact:

[www.abric.com](http://www.abric.com)

*Sealing Assets Globally with quality and integrity*