

JawLock is a versatile variable-length tamper evident seal with a specially developed small strap diameter that makes it ideal for securing items with a small aperture.

## APPLICATIONS

- In-land transportation
- Courier and Postal bags
- Security containers
- Gaming

## FEATURES

- Smooth strap
- Metal insert locking mechanism
- Easy removal with availability of side tear off option

## BENEFITS

- User friendly and gentle to the hands
- Enhanced security – metal is more tamper-resistant
- Manual removal improves safety and reduces costs

## SPECIFICATIONS

### Sizes & Types

- **JawLock 250 NTO** - 250mmL, 28x55 Tag Size, Non Tear Off (Code: ML25NA)
- **JawLock 250 STO** - 250mmL, 28x55 Tag Size, Side Tear Off (Code: ML25SA)

### Strength

Min. 14kg-f / 30.9lb-f

### Material

- Seal Body - Polypropylene
- Jaw - Metal Jaw

### Print

- Standard with hot stamped logo/name & serial number
- Laser printing available on request

### Colour

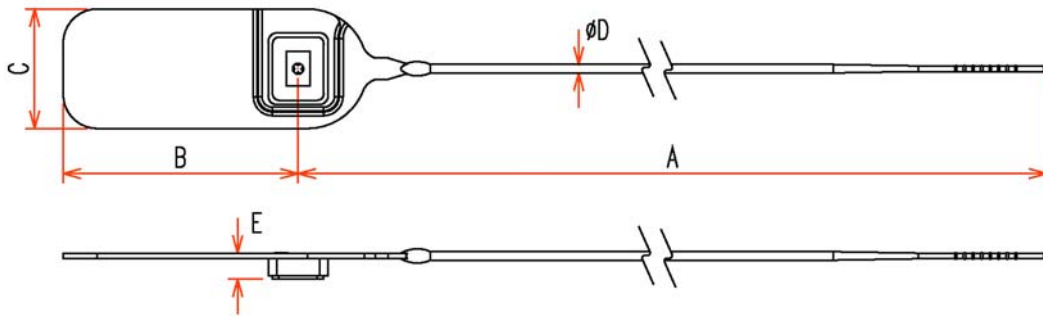
6 standard colours - Red, Yellow, Blue, Green, White, Orange  
Other colours can be supplied on request

### Packaging

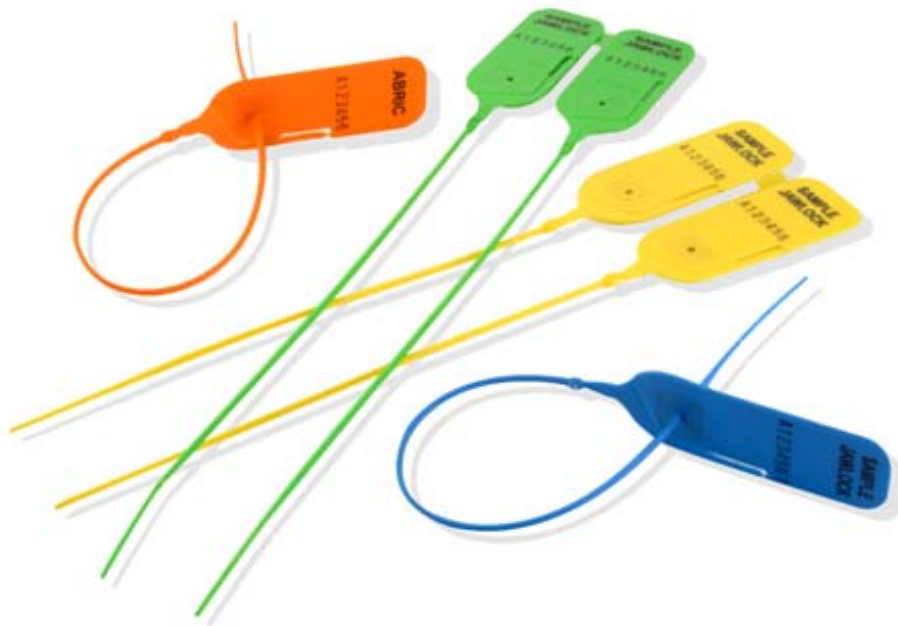
Inner carton 1000pcs, Outer carton 5000pcs



## DIMENSIONS



Type	A mm [inch]	B mm [inch]	C mm [inch]	D mm [inch]	E mm [inch]
JawLock 250	250 [9.84"]	55 [2.17"]	28 [1.10"]	2 [0.09"]	6 [0.24"]



ABRIC, your Global Supplier of Security Sealing Solutions.  
For further information, please visit our website for nearest contact:

[www.abric.com](http://www.abric.com)

*Sealing Assets Globally with quality and integrity*