

UnoLock 3.0

UnoLock 3.0 is an ISO 17712:2010 & C-TPAT compliant high security bolt seal, with printing and numbers encapsulated by a polycarbonate plastic cover. The barrel and pin coating is made of durable plastic to reveal evidence of tampering. It also features a \varnothing 18mm insert and pin head to keep the seal engaged on the container latch even when the plastic covers are removed or knocked off.

APPLICATIONS

- Shipping container
- Cargo containers
- Trucks
- Trailer vehicle door
- Rail freight
- Hatch

FEATURES

- Barrel covered by hard durable Polycarbonate
- Harden Zinc coated pin
- \varnothing 18mm Insert mechanism & pin head
- Partially transparent barrel revealing locking mechanism
- Limited to 130° rotation when engaged

BENEFITS

- Hard and durable cover to protect printing on barrel
- Reduces losses by providing high levels of security
- Bare pin head & insert mechanism larger than ISO Container latch hole
- Reveals any tampering attempts on the locking mechanism
- Prevents tampering by spinning the barrel at high speed

SPECIFICATIONS

Sizes

UnoLock 3.0 - Bare Pin with 80mmL x \varnothing 8 (UL808A)

Strength

Exceed of 1000kg-f / 2205lb-f

Material

Barrel - PC & ABS

Pin coated - PP

Bolt & Inserts - High strength steel

Print

Standard with silkscreen & inkjet printing serial number

Colour

6 standard colours - Red, Yellow, Blue, Green, White, Orange

Other colours can be supplied on request

Temperature

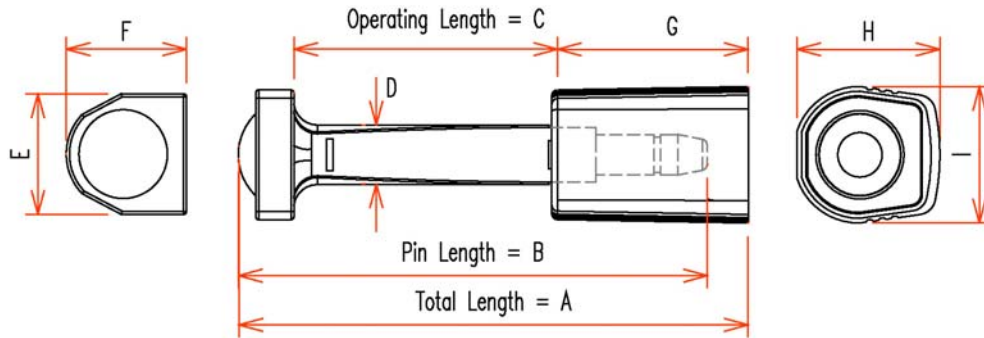
-40°C to 110°C (-40°F to 230°F)

Packaging

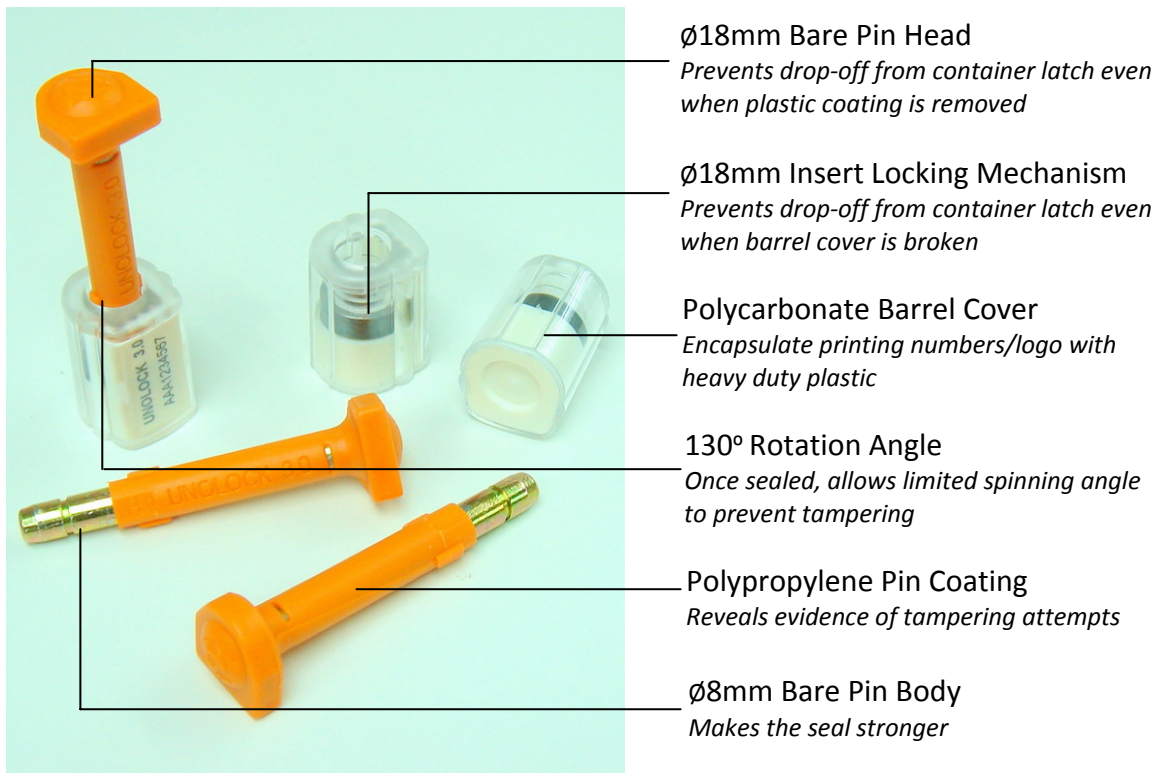
1 set per candy bar, 5 sets per bundle, 250 sets per carton



DIMENSIONS



Type	A mm [inch]	B mm [inch]	C mm [inch]	D mm [inch]	E mm [inch]	F mm [inch]	G mm [inch]	H mm [inch]	I mm [inch]
UnoLock 3.0	87 [3.43"]	80 [3.15"]	44 [1.73"]	10 [0.39"]	20.5 [0.81"]	20.5 [0.81"]	33.5 [1.32"]	25.3 [1.0"]	24 [0.94"]



ABRIC, your Global Supplier of Security Sealing Solutions.
For further information, please visit our website for nearest contact:

www.abric.com

Sealing Assets Globally with quality and integrity